

120Vac & 277Vac 150W Linear Electronic Metal Halide Ballast

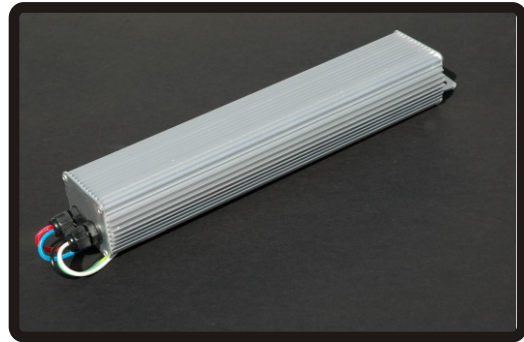
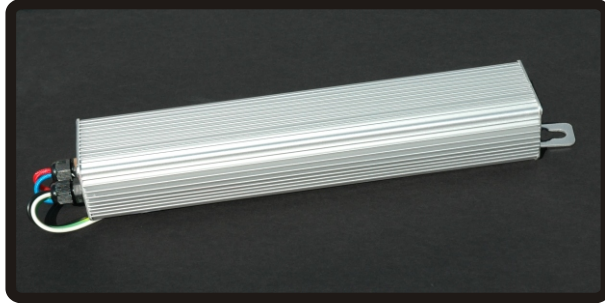
Models

PS15B90L for 120Vac Applications

PS15D90L for 277Vac Applications

General:

Designed with Pole Lighting in mind. Retractable mounting bracket with key hole slot can be used when mounting ballast inside of a pole fixture. One piece Ballast design with integral ignitor and solid state power factor correction minimizes wiring.

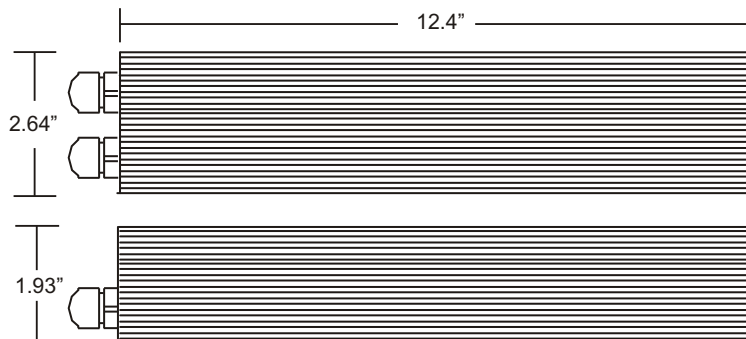
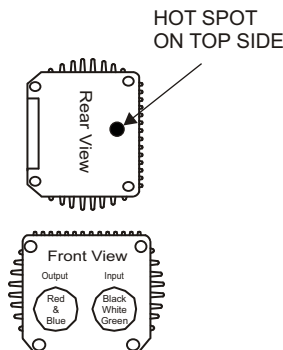
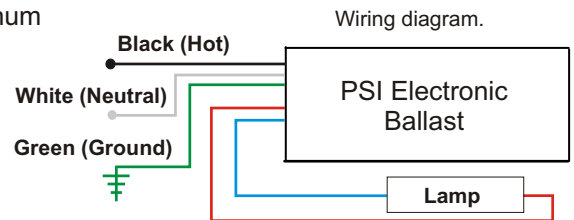


INPUT SPEC'S	PS15B90L	PS15D90L	OUTPUT SPEC'S	PS15B90L & PS15D90L
● Vac	120 +/-10%	277 +/-10%	● PS15B90L Lamp Power	150W +/- 2%
● Amp's	1.38A	1.37A	● PS15D90L Lamp Power	150W +/- 2%
● Power	165W	165W	● Lamp Drive Frequency	150Hz +/-10%
● Frequency	50/60Hz	50/60Hz	● Lamp Current Crest Factor	<1.2
● THD	<7%	<5%	● Open Circuit Voltage	>300V Square Wave
● Power Factor	>99%	>99%	● Ignitor Voltage @ Ballast Leads	>3.8KV
			● Ignition Failure Timeout	30 Min. Shutdown
			● Maximum distance from Ballast	3.0M or (9.8 feet) Max.
			● Compatible ANSI Lamp Types	M81, M102, M142

Please see ballast application guidelines for recommended wire routing in multiple lamp fixture applications..

MECHANICAL / ENVIRONMENTAL

- Enclosure Dimensions 12.4" L x 2.64" W x 1.93" H
- Unit Weight 49.8oz.
- Enclosure & Finish Clear Anodized Extruded Aluminum
- Operating Temperature -30° to 80° C
- EMI / RFI Compliance FCC Part 18
- Sound Rating Rated 'A'
- UL / CUL Listed File #E173598
- Input Wire UL 1015 18 ga. 105c, Length 8"
- Output Wire UL SF 18 ga. 200c, Length 8"



Keyhole mounting tab can be extended when mounting inside a pole. Mounting tab is flush with end of ballast when not being used.

PowerSelect Inc.

Warranty up to 5 years when operated below 80C.

Tel: (714) 901-3900 Fax: (714) 901-0026
E-mail - sales@powerselectinc.com

PSI reserves the right to modify any specifications without notice..

Revised 07-10 -05